



# Redefine Roughing It.



Accessories

2027 Land Cruiser Accessory Portfolio

Do not overload vehicle and properly secure roof load. See Owner's Manual for weight limits and restrictions. Off-roading is inherently dangerous and may result in vehicle damage. Accessories shown are not designed, manufactured, evaluated or warranted by Toyota. See brand accessory website for each accessory's warranty. Pricing shown is based on suggested retail pricing. See your local Toyota dealer for actual installed pricing and availability.



STORAGE

STYLING

PROTECTION

RACKS

TOWING & RECOVERY

STEPS

PERFORMANCE

TECHNOLOGY

LIGHTING

WHEELS

ACCESSORY PACKAGES



Accessories

# CONTENTS



# STORAGE

Going places means taking things with you. Toyota Storage Products let you maximize your cargo and cooler space while keeping it all safe, secure and organized.



## CARGO TOTE

Versatile cargo tote secures a variety of items and helps keep them in place.

- Removable divider panels help hold items upright
- Two carrying handles for easy loading and unloading
- Collapsible tote for easy storing when not in use

PT427-00120

**PPO MSRP: \$60**

**DIO MSRP: \$60**



## COIN HOLDER/ASHTRAY CUP

Self-contained coin holder/ashtray cup fits conveniently inside the cupholder.

- Easy to empty and clean
- Also provides handy storage for coins and other small items

74101-AE010

**PPO MSRP: \$36**

**DIO MSRP: \$17**



## VERTICAL CARGO NET

This outdoor-grade cargo net is perfect for keeping smaller, lightweight items from sliding around or getting damaged.

- Easy installation attaches to hooks and tabs in cargo area
- Elastic-mesh netting is durable and stain-resistant

PT347-60240

**PPO MSRP: \$65**  
**DIO MSRP: \$65**

STORAGE ■ ADDITIONAL ACCESSORIES



### ARB 47 QT ZERO FRIDGE/FREEZER

helps keep multiple cans cold and your meals frozen for long periods of time.

PTN89-0022J

**DIO MSRP: \$1,180.97**



### DOMETIC CFX5 45 ELECTRIC COOLER

has a minimal footprint, holds 67 cans, and is your ice-free electric cooler for camping trips, portable fridge for the van or boat.

PTN97-0023B

**DIO MSRP: \$1,050**



### DOMETIC CFX5 45 PROTECTIVE COVER

is designed to protect your CFX5 from damage on even the most rugged adventures.

PTN97-0023D

**DIO MSRP: \$155**

STORAGE ■ ADDITIONAL ACCESSORIES



**DOMETIC CFX5 55IM ELECTRIC COOLER**

holds up to 84 cans, so it's a go-to for long weekends with friends or as a travel fridge.

PTN97-0023A

**DIO MSRP: \$1,200**



**DOMETIC CFX5 55IM PROTECTIVE COVER**

is designed to protect your CFX5 from damage on even the most rugged adventures.

PTN97-0023F

**DIO MSRP: \$170**



**DOMETIC CFX5 95DZ ELECTRIC COOLER: DUAL ZONE**

features vacuum insulated panels to help deliver outstanding insulation, and the two cooling compartments help keep everything at the right temp.

PTN97-0023C

**DIO MSRP: \$1,500**

STORAGE ■ ADDITIONAL ACCESSORIES



**DOMETIC CFX5 95DZ PROTECTIVE COVER**

is designed to protect your CFX5 from damage on even the most rugged adventures.

PTN97-0023E

**DIO MSRP: \$200**



**DOMETIC RECON HARDSIDE 16L: SILT**

is designed for grab-and-go trips, roadside snacks, or as part of a multi-cooler stack.

PTN97-0025A

**DIO MSRP: \$225**



**DOMETIC RECON HARDSIDE 16L: GLOW**

is designed for grab-and-go trips, roadside snacks, or as part of a multi-cooler stack.

PTN97-00250-04

**DIO MSRP: \$225**

STORAGE ■ ADDITIONAL ACCESSORIES



**DOMETIC RECON HARDSIDE  
41L: SILT**

is made for weekend escapes, day trips with the crew, or as part of a full-system setup.

PTN97-00250-06

**DIO MSRP: \$325**



**DOMETIC RECON HARDSIDE  
41L: GLOW**

is made for weekend escapes, day trips with the crew, or as part of a full-system setup.

PTN97-00250-05

**DIO MSRP: \$325**



**DOMETIC RECON HARDSIDE  
69L: SILT**

is great on its own or as the base of a multi-cooler Recon system.

PTN97-00250-08

**DIO MSRP: \$425**

STORAGE ■ ADDITIONAL ACCESSORIES



**DOMETIC RECON HARDSIDE  
69L: GLOW**

is great on its own or as the base of a multi-cooler Recon system.

PTN97-00250-07

**DIO MSRP: \$425**



**PELICAN® 14QT PERSONAL COOLER**

is Pelican's most versatile cooler so you can pack everything you need into your weekend.

Exterior Dimensions: 18.00 x 11.50 x 13.00 in

PTN98-00115 (DARK GRAY/GREEN)  
PTN98-00110 (WHITE/GRAY)  
PTN98-00120 (TAN/WHITE)  
PTN98-00120 (CEMENT/WHITE)

**DIO MSRP: \$119.95**



**PELICAN® 20QT ELITE COOLER**

is designed for you, whatever the adventure.

Exterior Dimensions: 18.80 x 12.60 x 17.70 in

PTN98-00130 (GRAY/GREEN)  
PTN98-00135 (WHITE/GRAY)  
PTN98-89138 (CEMENT/WHITE)

**DIO MSRP: \$206.95**

STORAGE ■ ADDITIONAL ACCESSORIES



### PELICAN 30QT ELITE COOLER

is designed for you, for whatever the adventure.  
Exterior Dimensions: 25.30 x 19.00 x 18.50 in

PTN98-00140 (DARK GRAY/GREEN),  
PTN98-00145 (WHITE/GRAY),  
PTN98-00175 (CEMENT/WHITE)

**DIO MSRP: \$258.95**



### PELICAN 45QT ELITE WHEELED COOLER

is designed for you, for whatever the adventure.  
Exterior Dimensions: 29.66 x 20.00 x 19.25 in

PTN98-00150 (TAN),  
PTN98-00155 (WHITE),  
PTN98-00153 (GRAPHITE)

**DIO MSRP: \$465.95**



### PELICAN BX135 CARGO CASE

is the perfect solution to keep your valuable gear, clothing, tools, and even dry food organized, secured, and protected.  
Exterior Dimensions: 41.00 x 17.25 x 16.00 in

PTN98-00101  
**DIO MSRP: \$382.95**

STORAGE ■ ADDITIONAL ACCESSORIES



### PELICAN BX90R CARGO CASE

is the perfect solution to keep your valuable gear, clothing, tools, and even dryfood organized, secured, and protected.

Exterior Dimensions: 36.62 x 20.00 x 11.50 in

PTN98-00090

**DIO MSRP: \$382.95**



### PELICAN BX140R CARGO CASE

is the perfect solution to keep your valuable gear, clothing, tools, and even dry food organized, secured, and protected.

Exterior Dimensions: 46.00 x 24.00 x 11.50 in

PTN98-00102

**DIO MSRP: \$496.95**



### PELICAN BX55S CARGO CASE

is the perfect solution to keep your valuable gear, clothing, tools, and even dry food organized, secured, and protected.

Exterior Dimensions: 36.63 x 13.00 x 11.50 in

PTN98-00070

**DIO MSRP: \$331.95**

STORAGE ■ ADDITIONAL ACCESSORIES



**PELICAN RFMT2 CARGO CASE  
ROOF MOUNT KIT**

No drilling required and locks to vehicle securely. Allows case to be removed or mounted in seconds. Requires BX90R or BX140R cargo case and roof rack.

PTN98-00020

**DIO MSRP: \$248.95**



**YAKIMA® CBX LG**

provides 16 cu. ft. of storage space in this cargo box.

PTN97-00194

**DIO MSRP: \$999**



**YAKIMA® CBX XXL**

provides 21.5 cu. ft. of storage space in this cargo box.

PTN97-00195

**DIO MSRP: \$1,149**

STORAGE ■ ADDITIONAL ACCESSORIES



## YAKIMA® SKINNYWARRIOR

Narrow cargo basket leaves room on bars for additional accessories.

*\*Yakima® Stretch Net Skinnywarrior Sold Separately*

PTN97-00196

**DIO MSRP: \$529**

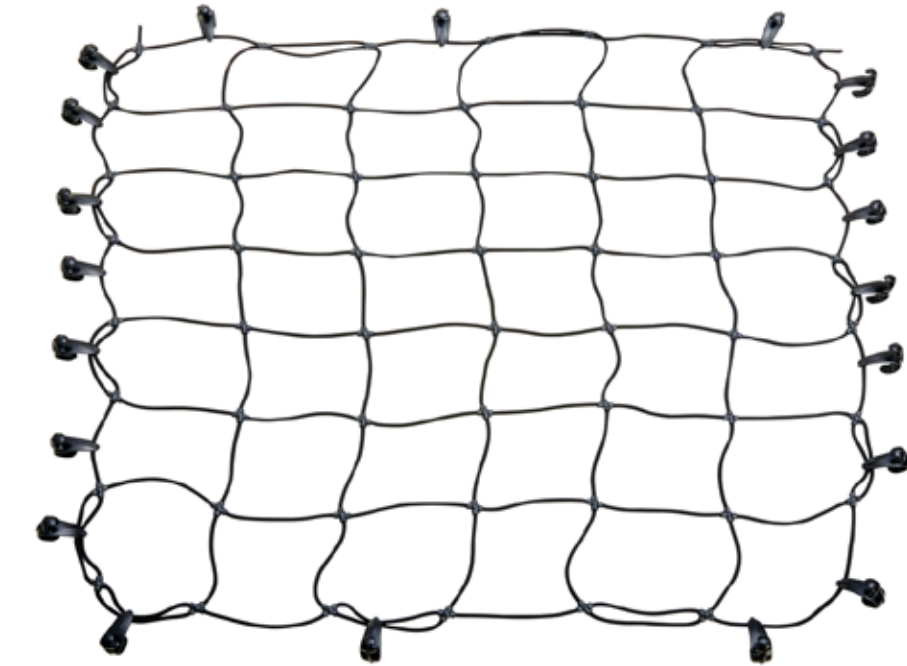


## YAKIMA SKYRISE HD

rooftop tent with expansion pop-out for covered ladder access.

PTN97-00228

**DIO MSRP: \$2,889**



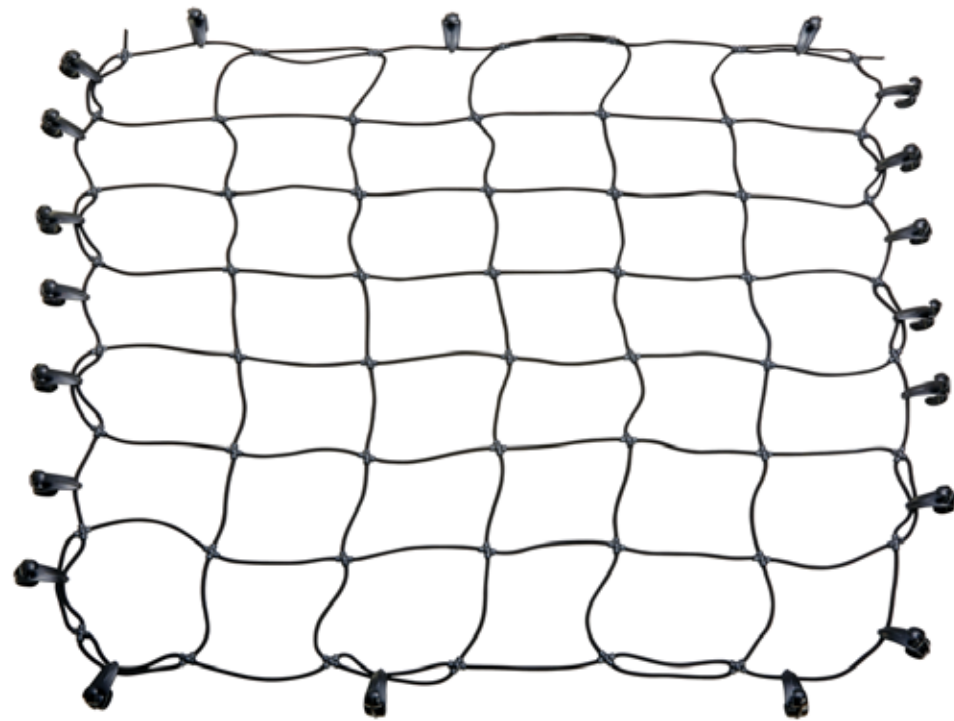
## YAKIMA® STRETCH NET: LARGE

Custom fit stretch net for MegaWarrior cargo basket. Helps keep gear safe and secure, even on bumpy back roads

PTN97-00229

**DIO MSRP: \$75**

**STORAGE ■ ADDITIONAL ACCESSORIES**

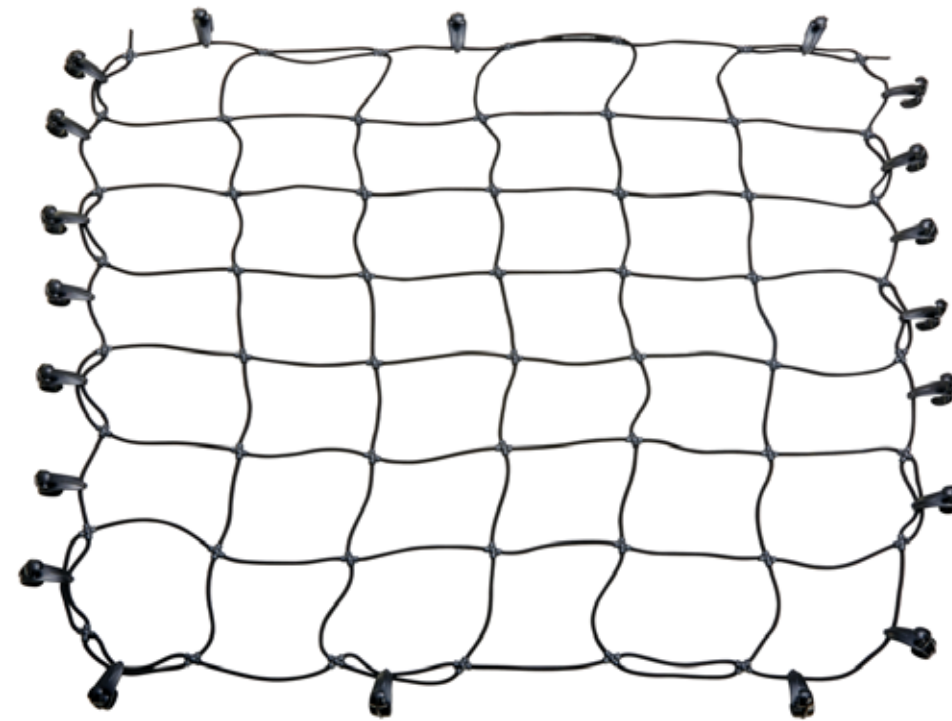


**YAKIMA® STRETCH NET: MEDIUM**

Custom fit stretch net for OffGrid Md cargo basket. Helps keep gear safe and secure, even on bumpy back roads.

**PTN97-00197**

**DIO MSRP: \$65**



**YAKIMA® STRETCH NET SKINNYWARRIOR**

Stretch net designed for the SkinnyWarrior cargo basket. Helps keep gear safe and secure, even on bumpy back roads.

**PTN97-00198**

**DIO MSRP: \$65**



# STYLING

Give your Tundra the personal touch with Toyota Styling Products. From front bumper inserts to exhaust tips, and everything in between, you can customize the look of your vehicle in a way that makes it uniquely your own.

STYLING ■ GENUINE



### **BLACK BADGE OVERLAY: iFORCE MAX**

Molded from tough and durable ABS plastic, blackout emblem overlays are engineered to precisely fit over existing badges, making it easy to customize in minutes.

- Designed to fit over existing chrome badging
- Easy to install—simply remove tape line and apply over clean badges

PT948-60250-02

**PPO MSRP: \$65**

**DIO MSRP: \$45**



Accessories



# PROTECTION

From floor mats and liners to first aid kits, paint protection films to sunshades, Toyota Protection Products are designed to help keep your vehicle, and its occupants, safe, sound and comfortable.

2027 Land Cruiser Accessory Portfolio



## ALL-WEATHER CARGO MAT

Engineered to precisely fit your vehicle, all-weather cargo mats are made from durable, flexible, weather-resistant material that cleans easily.

- Precise injection molding uses Toyota's original vehicle design data for a perfect fit
- Liners feature ribbed channels to better hold moisture
- Skid-resistant backing helps keep the mat in place

PT908-60245-20

**PPO MSRP: \$140**  
**DIO MSRP: \$140**



## ALL-WEATHER FLOOR LINERS

Engineered to precisely fit your vehicle, all-weather floor liners are made from durable, flexible, weather-resistant material that cleans easily.

- Precise injection molding uses Toyota's original vehicle design data for a perfect fit
- Includes two piece 2nd row liner for more complete coverage
- Liners feature ribbed channels to better hold moisture and a stylish vehicle logo on the front liners
- Skid-resistant backing and quarter-turn fasteners help keep the liners in place

PT908-60240-20

**PPO MSRP: \$248**  
**DIO MSRP: \$248**

This floor mat/liner was designed specifically for use on this model and model year vehicle and SHOULD NOT be used on other vehicles. To avoid potential damage to your vehicle's interior, the floor mat/liner must be secured with its fasteners. Do not install a floor mat/liner on top of an existing floor mat.



## BODY SIDE MOLDINGS

Body side moldings help protect against careless door swings and other parking lot mishaps while adding a little extra exterior style.

- Molded perimeter lip helps contain spills
- Advanced design helps protect the cargo area and the rear seatback

PT29A-60240-30 (040)  
PT29A-60240-31 (089)  
PT29A-60240-32 (1L7)  
PT29A-60240-33 (2ZC)  
PT29A-60240-37 (4V8)  
PT29A-60240-08 (8X5)

**PPO MSRP: \$275**  
**DIO MSRP: \$260**



## CARGO COVER

The retractable cargo cover helps conceal your cargo area from view for added protection and peace of mind.

- Features UV-resistant material that helps protect items from sun damage and fading, and removes easily to make room for larger items

64009-60010-C0

**PPO MSRP: \$210**  
**DIO MSRP: \$190**



## CARPET CARGO MAT

The ideal solution for helping keep the cargo area looking like new.

- Helps prevent premature cargo-area wear and tear
- Durable, skid-resistant backing helps keep the mat in place

PT926-60240-20

**PPO MSRP: \$140**  
**DIO MSRP: \$140**

This floor mat/liner was designed specifically for use in your model and model year vehicle and SHOULD NOT be used in any other vehicle. To avoid potential interference with pedal operation, each mat/liner must be secured with its fasteners. Do not install a floor mat/liner on top of an existing floor mat.



### CARPET FLOOR MATS

Long-wearing, fade resistant carpet floor mats help keep your carpet neat and clean.

- Precisely engineered to fit your vehicle's floor
- Skid-resistant backing and quarter-turn fasteners help secure mat in position
- Land Cruiser logo on the front mats adds a customized touch
- Second row carpet floor mats accommodate Land Cruiser's seating configurations

**PPO MSRP: \$199**  
**DIO MSRP: \$199**

PT944-60244-20



### DOOR EDGE FILM

Help prevent door edge dings with this protective finishing touch.

- Transparent film fit to door edge contours

**PPO MSRP: \$100**  
**DIO MSRP: \$49**

PT907-60240



### DOOR EDGE GUARDS

Help prevent door edge dings and chipped paint with this protective finishing touch.

- Thermoplastic-coated stainless steel is precisely color matched to the exterior paint
- Blend seamlessly to complement exterior styling

PT936-60240-30 (040)  
PT936-60240-31 (089)  
PT936-60240-35 (1L7)  
PT936-60240-36 (2ZC)  
PT936-60240-34 (4V8)  
PT936-60240-37 (8X5)

**PPO MSRP: \$165**  
**DIO MSRP: \$135**



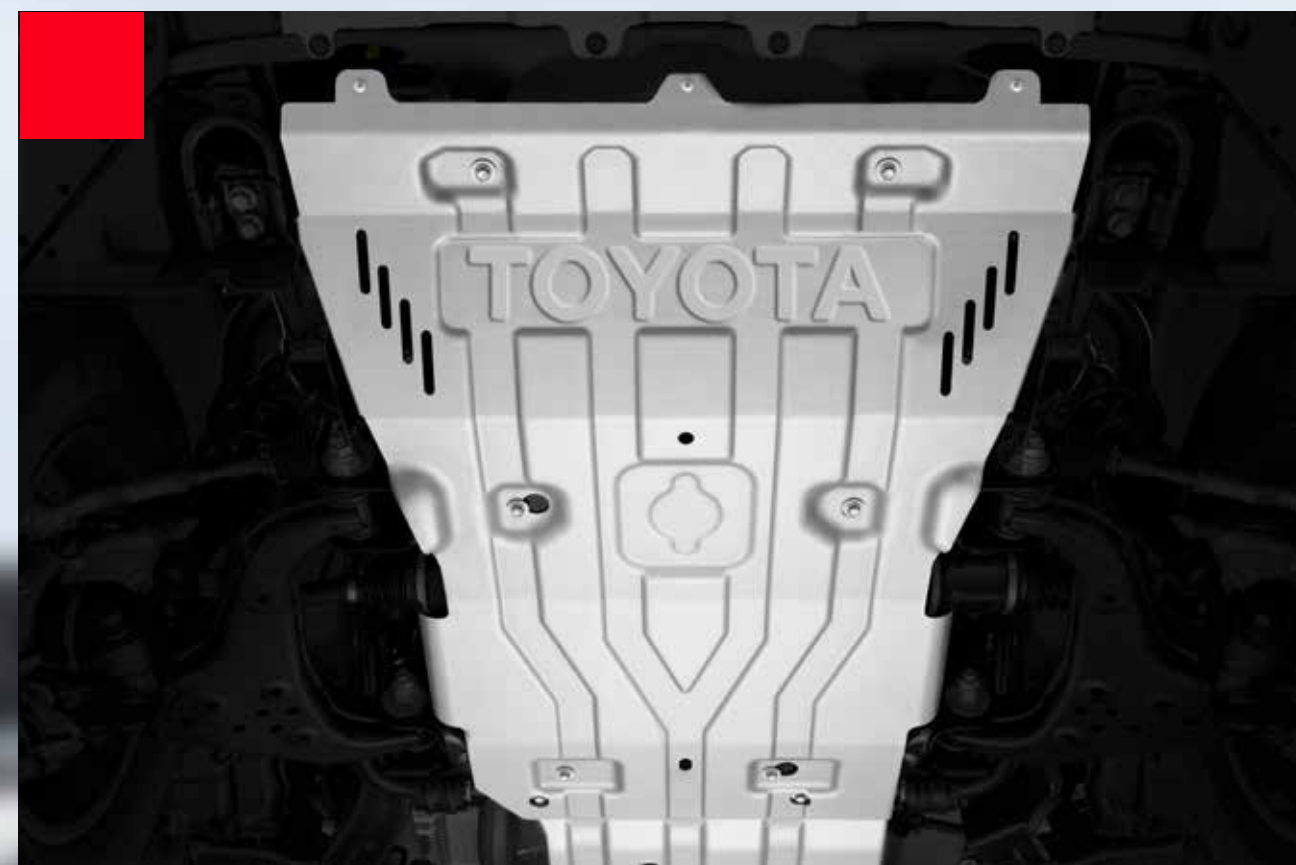
### EMERGENCY ASSISTANCE KIT

Emergency Assistance Kit in compact zipper case includes:

- Versatile, stainless steel pocket tool with pliers, wire cutters and two screwdrivers
- Emergency blanket, flashlight, work gloves, automotive-grade hose tape, tire gauge, bungee cord, shop towel and tether strap
- Booster/jumper cables

**PPO MSRP: \$78**  
**DIO MSRP: \$75**

PT420-00130



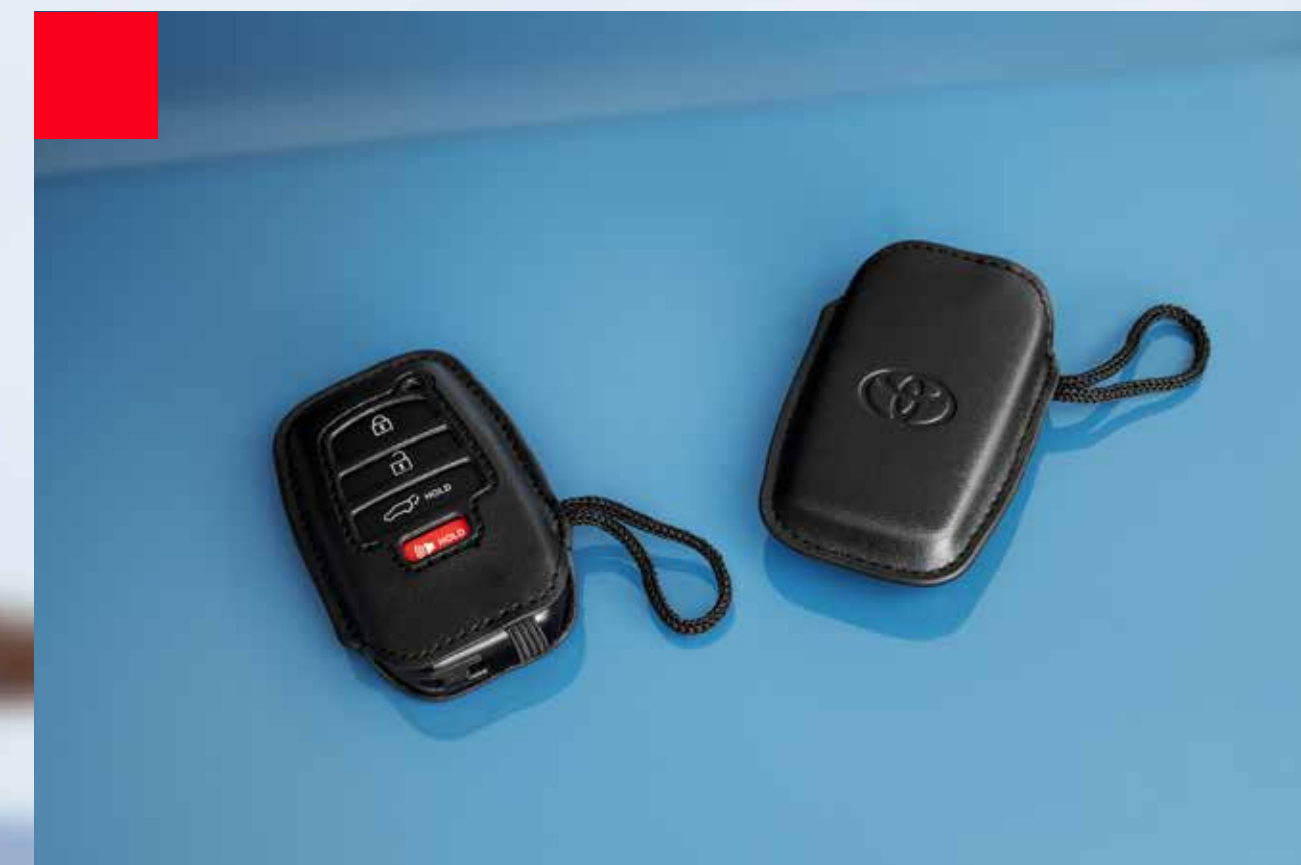
### FRONT SKID PLATE

Enhance your Land Cruiser by safeguarding its undercarriage with the front skid plate.

- High strength steel shields your vehicle's underbody from hazards and helps reduce the risk of damage
- Tested to optimize protection and minimize vibration and noise for a smooth ride
- Simple installation requires no drills and uses existing Land Cruiser attachment mounts

**PPO MSRP: \$440**  
**DIO MSRP: \$400**

PT228-60242



### KEY GLOVES

These stylish Land Cruiser Key Gloves are designed to protect your key.

- Durable synthetic leather
- Key Gloves features an embossed logo on the back
- Set of two key gloves

**PPO MSRP: \$25**  
**DIO MSRP: \$20**

PT420-47230-01



### MULTIMEDIA SCREEN PROTECTOR

Enhance your driving experience with the Toyota Multimedia Screen Protector for 8 in. screen

- Made from high quality, tempered glass, it shields your screen from scratches and is fingerprint resistant
- The advanced coatings help ensure optimal visibility without compromising screen brightness
- Anti-reflection coating is engineered to help improve visibility
- Easy, tool-free installation takes less than five minutes, making it a seamless addition to your vehicle

**PPO MSRP: \$105**  
**DIO MSRP: \$69**

PT976-35240



### PAINT PROTECTION FILM: FRONT BUMPER

Genuine Toyota paint protection film helps protect the paint finish from chips and scratches.

- Multiple film layers of durable, nearly invisible urethane help provide protection and resist discoloration
- •Designed for specific sections of the vehicle that are most prone to chipping
- •Kit includes paint protection film for front bumper

**DIO MSRP: \$525**

PT907-60244



### PAINT PROTECTION FILM: HOOD, FENDERS, DOOR CUPS, MIRROR BACKS

Genuine Toyota paint protection film helps protect the paint finish from chips and scratches.

- Multiple film layers of durable, nearly invisible urethane help provide protection and resist discoloration
- Designed for specific sections of the vehicle that are most prone to chipping
- Kit includes paint protection film for hood, fenders, mirror backs and door cups

**PPO MSRP: \$439**  
**DIO MSRP: \$325**

PT907-60243



# RACKS

Maximize your vehicle's capability with Rack Products. These accessories encompass everything you need to add additional cargo capacity and keep your gear organized.

RACKS ■ GENUINE



## ROOF CROSS BARS

Roof Cross Bars help carry additional cargo.

- Includes mounting screws that attach to fittings in the roof rails
- Aerodynamic styling to help minimize wind noise
- Can support 165 lbs. of dynamic load when weight is evenly distributed across both bars
- Set of two black bars

PT970-60240

**PPO MSRP: \$570**

**DIO MSRP: \$530**



## ROOF RACK

The roof rack is designed to secure cargo with more confidence.

- Provides additional secure tie-down points for various roof rack accessories

PT970-60241

**PPO MSRP: \$1,440**

**DIO MSRP: \$1,400**

RACKS ■ ADDITIONAL ACCESSORIES



**THULE® CANYON XT ROOF BASKET**

Provides storage for gear of all shapes and sizes. Stylish low-profile design, with tapered side walls for easier loading and unloading.

- Requires Genuine Toyota Cross Bars

PTN0E-00195  
**DIO MSRP: \$542**



**THULE® FORCE 3 L CARGO BOX**

A roof-mounted cargo box excellent for everyday and active use.

- Requires Genuine Toyota Cross Bars

PTN0E-00194  
**DIO MSRP: \$1,015**



**THULE® PRORIDE XT BIKE CARRIER**

An upright bike carrier with convenient mounting (holds Bikes up to 44 lbs.)

- Requires Genuine Toyota Cross Bars

PTN0E-00193  
**DIO MSRP: \$350**

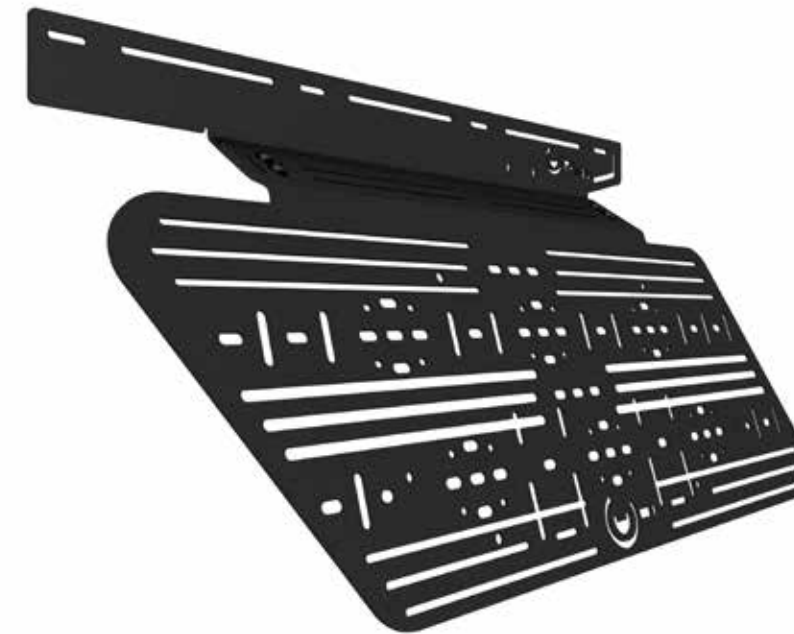
**RACKS ■ ADDITIONAL ACCESSORIES**



**PRINSU PRO CAB RACK W/  
STANDARD WIND DEFLECTOR**

is designed to push the boundaries for  
adventure.

**PTN59-60241**  
**DIO MSRP: \$1,355**



**PRINSU PRO RACK WINDOW  
ACCESSORY PANEL DRIVER SIDE**

has you covered when you need additional rack  
space.

**PTN59-60242**  
**DIO MSRP: \$475**



**PRINSU PRO RACK WINDOW  
ACCESSORY PANEL PASSENGER SIDE**

has you covered when you need additional rack  
space.

**PTN59-60243**  
**DIO MSRP: \$475**

**RACKS ■ ADDITIONAL ACCESSORIES**



**THULE® SNOWPACK L SKI RACK**

An aerodynamic ski rack for all types of skis and snowboards.

- Requires Genuine Toyota Cross Bars

**PTN0E-00192**

**DIO MSRP: \$400**



# TOWING & RECOVERY

When an adventure brings the unexpected, Toyota Towing & Recovery accessories help you get back on the road. Whether it's airing down or up, tow straps or shackles, hitches or traction boards, you'll be ready for just about anything.

**2027 Land Cruiser** Accessory Portfolio



## BALL MOUNT

Toyota ball mount provides precise drop/rise to maintain vehicle departure angle.

- Trailer ball sold separately

PT228-60246

**PPO MSRP: \$85**

**DIO MSRP: \$80**

TOWING & RECOVERY ■ ADDITIONAL ACCESSORIES



### ARB DIGITAL TIRE INFLATOR

provides for an accurate air pressure gauge and tire inflation equipment for your vehicle.

PTN89-89221  
**DIO MSRP: \$90.95**



### ARB E-Z DEFLATOR

has a unique, patented design of the E-Z Deflator that helps make adjusting your tire pressure a fast, accurate operation.

PTN89-00222  
**DIO MSRP: \$74.95**



### ARB PREMIUM RECOVERY KIT

contains what you need to get off-road, including tree trunk protector, snatch strap, snatch block and bow shackles.

PTN89-34220  
**DIO MSRP: \$539.95**

TOWING & RECOVERY ■ ADDITIONAL ACCESSORIES



**ARB PUMP UP KIT**

is an accessory for the vehicle-mounted ARB Air Compressors.

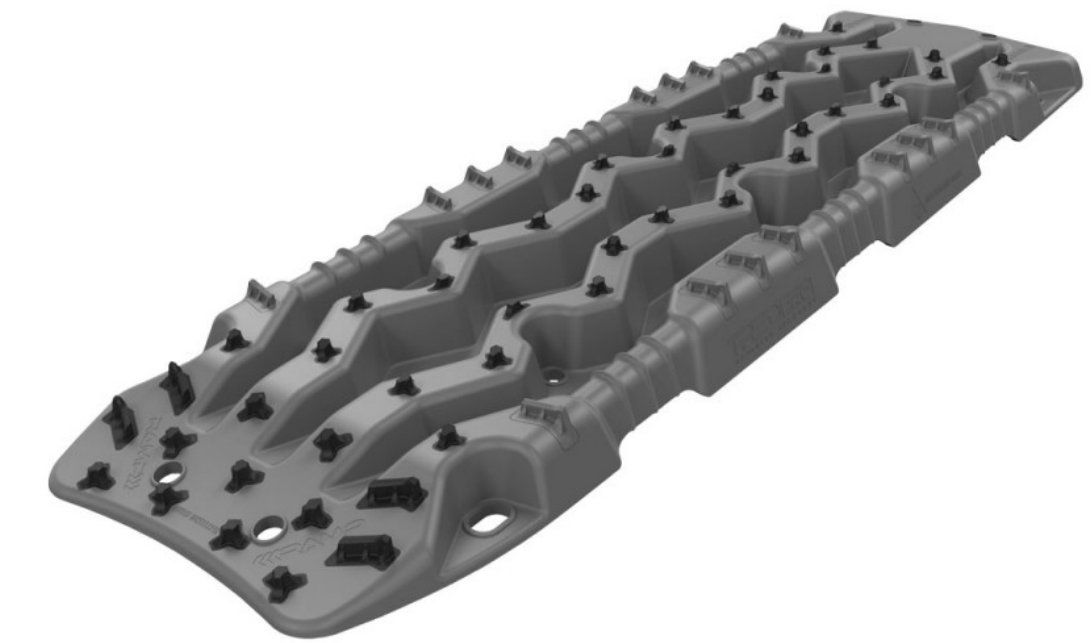
PTN89-8922A  
**DIO MSRP: \$119.95**



**ARB SINGLE MOTOR PORTABLE 12V COMPRESSOR**

is made of high-grade, lightweight material, with impressive flow rate. Features portable case.

PTN89-8922D  
**DIO MSRP: \$519.95**



**ARB TRED (TOTAL RECOVERY & EXTRACTION DEVICE) PRO GREY**

is an effective recovery device designed to help get you out of trouble when traction is lost in tough conditions such as sand, mud, or snow.

PTN89-00224  
**DIO MSRP: \$379.95**



### ARB TRED PRO MOUNTING KIT

has been designed to secure the Total Recovery and Extraction Devices (TRED's).

PTN89-00233

**DIO MSRP: \$109.95**



### ARB TRED (TOTAL RECOVERY & EXTRACTION DEVICE) PRO RED

is an effective recovery device designed to help get you out of trouble when traction is lost in tough conditions such as sand, mud, or snow.

PTN89-00223

**DIO MSRP: \$379.95**



### ARB WEEKENDER RECOVERY KIT

contains recovery essentials that are helpful when your vehicle gets stuck.

PTN89-34222

**DIO MSRP: \$174.95**

TOWING & RECOVERY ■ ADDITIONAL ACCESSORIES



**FACTOR 55™ BAJA VEHICLE RECOVERY KIT**

is packed with the essential tools to help recover a vehicle in off-road scenarios.

PTN0A-00240  
**DIO MSRP: \$650.01**



**FACTOR 55™ OFF ROAD HITCHLINK 2.0**

slides into the receiver, secure it with a pin, and you're ready to pull

PTN0A-00240-03 (RED)  
PTN0A-00240-02 (BLACK)  
PTN0A-00240-01 (GRAY)  
**DIO MSRP: \$103.75**



**FACTOR 55™ RECOVERY SOFT SHACKLE**

may be used as a lightweight replacement connecting rigging for common steel screw pin shackles.

PTN0A-00241  
**DIO MSRP: \$68.75**



## WARN® EPIC D-RING SHACKLE

Slide the D-Ring Recovery Hook into the receiver, secure it with a pin, and you're ready to pull.

PTN0A-00242  
**DIO MSRP: \$68.75**



## WARN® EPIC RECOVERY KIT

Packed with the essential gear to help recover a vehicle in off-road scenarios. Complete with Warren's recovery backpack.

PTN0A-00243  
**DIO MSRP: \$623.56**



Accessories



# STEPS

Getting into and out of your vehicle has never been more convenient. Wherever you go you'll always be a step ahead.

STEPS ■ GENUINE



## PREDATOR DROP STEPS

A highly functional and stylish upgrade for your vehicle, the predator drop step complements the Land Cruiser's rugged design.

- Black powder-coat finish
- Drop steps for easy access
- Durable, 6061 aluminum construction is chip and rust-resistant

PT925-60240

**PPO MSRP: \$705**  
**DIO MSRP: \$675**



# PERFORMANCE

When you want to put the “go” in going places, Toyota Performance Products are ready when you are. These performance accessories will have your vehicle handling and performing at the top of its game.

**2027 Land Cruiser** Accessory Portfolio



## PERFORMANCE CAT-BACK EXHAUST

Transform your vehicle with the performance cat-back exhaust for ultimate performance and a powerful sound.

- Crafted from stainless steel for lasting strength
- More sporty, aggressive tone to amplify your drive
- Shed some weight with mass reduction compared to the standard exhaust for sharper handling
- Improved flow for better engine efficiency compared to the standard exhaust

PTR03-60243 (Tail Pipe)  
PTR03-60250 (Center Pipe)

**PPO MSRP: \$1,430**  
**DIO MSRP: \$1,360**

 Accessories



# TECHNOLOGY

Being on the go doesn't mean being out of touch. Toyota Technology accessories keep you safe, charged up and within reach thanks to dash-cams, solar chargers, signal boosters and more that integrate seamlessly with your vehicle.

2027 Land Cruiser Accessory Portfolio



## INTEGRATED DASHCAM

Designed to reliably capture video, image, sound, and location data while you operate your vehicle. Will begin recording upon ignition to capture the drive or on impact when moving or parked.

- Playback or video download is available via the Smartphone App or PC Tool
- Includes a 16GB Industrial Grade MicroSD memory card

PT949-34222

**PPO MSRP: \$375**  
**DIO MSRP: \$450**



## QUICK CHARGING CABLE PACKAGE

Features automotive grade quality USB charging cables, a convenient way to have your smart devices charged while on the go.

Includes:

- 1-Apple Lightning to USB-A Cable - 3'
- 1-Apple Lightning to USB-C Cable - 3'
- 1-USB-C to USB-A Cable - 3'
- 1-USB-C to USB-C Cable - 3'

PTQ76-00230

**PPO MSRP: \$75**  
**DIO MSRP: \$69**



## UNIVERSAL TABLET HOLDER

Compatible with virtually all multimedia devices, it holds your tablet, phone, music or video player.

- Durable construction with spring-loaded arms and adjustable pivot/tilt

PT949-47160-02

**PPO MSRP: \$99**  
**DIO MSRP: \$79**



# LIGHTING

Stylish and functional, Toyota Lighting accessories help you light the night, cut through the fog, illuminate your campsite and more. Whether exterior or interior, these lighting products are built to last.

LIGHTING ■ GENUINE



## ILLUMINATED DOOR SILLS

The Toyota LED logo illuminates white when the front doors are open to help with entry into the Land Cruiser.

- Durable corrosion resistant finish features brushed polished accents
- This smart and stylish addition helps prevent door sill scuffs and scrapes

PT944-60240

**PPO MSRP: \$395**

**DIO MSRP: \$345**

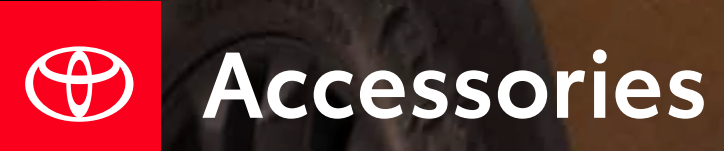
LIGHTING ■ ADDITIONAL ACCESSORIES



**PELICAN 3410M RIGHT ANGLE LIGHT**

is the ultimate compact work light.

PTN98-00160  
**DIO MSRP: \$64**



# WHEELS

Set yourself up for adventure with Toyota Wheels and accessories. Whether it's a custom look or the security of wheel and spare tire locks, these are just what you need to keep your Land Cruiser's wheels safe, secure and within specification.

**2027 RAV4** Accessory Portfolio



### ALLOY WHEEL LOCKS: BLACK CHROME

are precisely machined and weight-balanced to help secure wheels and tires against theft.

- Nickel plating helps ensure superior corrosion protection and lasting shine
- Special key tool and collar guide enable simple, five-minute installation
- Resistant to lock-removal tools and secured by a single unique key

PK456-00J00

**PPO MSRP: \$105**  
**DIO MSRP: \$85**



### ALLOY WHEEL LOCKS: CHROME

are precisely machined and weight-balanced to help secure wheels and tires against theft.

- Nickel plating helps ensure superior corrosion protection and lasting shine
- Special key tool and collar guide enable simple, five-minute installation
- Resistant to lock-removal tools and secured by a single unique key

00276-00900

**PPO MSRP: \$105**  
**DIO MSRP: \$85**



# ACCESSORY PACKAGES

Toyota Accessory Packages are the most convenient way to get the style, protection and performance you want for your vehicle. By bundling together multiple accessories tailored specifically for each model you can outfit your Toyota just the way you want.

2027 Land Cruiser Accessory Portfolio



## SKID PLATE PACKAGE

### FRONT SKID PLATE, STEEL SKID PLATE: TRANSMISSION

Beef up the aggressive stance of your Land Cruiser while protecting its underbody from off-road hazards:

- Front Skid Plate
- Steel Skid Plate: Transmission

PT228-60242  
PT228-35247

**PPO MSRP: \$876**  
**DIO MSRP: \$725**

**Toyota Disclaimer of Warranty and Liability:** Additional accessories are not Genuine Toyota parts or accessories and were not designed or manufactured by Toyota. Toyota has not fully evaluated these products to determine its overall impact on the performance or safety of any Toyota vehicle onto which it is installed or to determine whether installation would render the vehicle illegal for operation on public roadways in any states. Installation of these products may impact your vehicle's warranty. These products are not warranted by Toyota, and Toyota expressly disclaims any warranty for these products, including without limitation, any implied warranties of merchantability and of fitness for particular purpose. Toyota also disclaims all liability for direct, indirect, special, incidental or consequential damages, including but not limited to, damage to or loss of personal or commercial property, loss of use, cost of purchase of replacement goods, or claims of customers of any Toyota dealer that result from the use of these products. This product is not available in Hawaii. Shipping Charges not included.

**Genuine Accessories Warranty:** For Genuine Toyota Accessories purchased at the time of the new vehicle purchase, the Toyota Accessories Warranty coverage is in effect for 36 months/36,000 miles from the vehicle's in-service date, which is the same coverage as the Toyota New Vehicle Limited Warranty. For Genuine Toyota Accessories purchased after the new vehicle purchase the coverage is 12 months, regardless of mileage, from the date the accessory was installed on the vehicle, or the remainder of any applicable new vehicle warranty, whichever provides greater coverage (third-party installation labor costs excluded). For complete details about Toyota's warranties, see your local Toyota dealer.

**Additional Accessory Supplier Warranty:** See supplier website for more information regarding warranty, product details, installation and proper use.

**ARB:** [arbusa.com/warranty](http://arbusa.com/warranty)

**Carmate:** [carmate-usa.com/pages/warrantyv](http://carmate-usa.com/pages/warrantyv)

**MillerCAT:** [millercat.com/pages/warranty-information](http://millercat.com/pages/warranty-information)

**Diamondback:** [diamondbackcovers.com/pages/warranty-form](http://diamondbackcovers.com/pages/warranty-form)

**Dometic:** [dometic.com/en-us/support/warranty](http://dometic.com/en-us/support/warranty)

**EGR:** [egrusa.com/warranty](http://egrusa.com/warranty)

**Fab Fours:** [fabfours.com/warranty-registration](http://fabfours.com/warranty-registration)

**Factor55:** <https://www.factor55.com/warranty>

**Go Rhino:** [realtruck.com/go-rhino-warranty/](http://realtruck.com/go-rhino-warranty/)

**Kammok:** [kammok.com/pages/warranty](http://kammok.com/pages/warranty)

**Kurgo:** [kurgo.com/lifetime-warranty](http://kurgo.com/lifetime-warranty)

**Napier:** [napieroutdoors.com/pages/warranty-policy](http://napieroutdoors.com/pages/warranty-policy)

**Pelican:** [pelican.com/us/en/support/warranty/](http://pelican.com/us/en/support/warranty/)

**Prinsu:** [prinsu.com/warranty](http://prinsu.com/warranty)

**RAM Mount:** [rammount.com/pages/warranty](http://rammount.com/pages/warranty)

**Retrax:** [realtruck.com/retrax-warranty/](http://realtruck.com/retrax-warranty/)

**Rigid:** [rigidindustries.com/more-info/warranty-information](http://rigidindustries.com/more-info/warranty-information)

**Thule:** [thule.com/en-us/about-thule/warranty](http://thule.com/en-us/about-thule/warranty)

**Warn:** [warn.com/warranties](http://warn.com/warranties)

**WeBoost:** [weboost.com/return-warranty-policy](http://weboost.com/return-warranty-policy)

**Yakima:** [yakima.com/pages/lifetime-warranty](http://yakima.com/pages/lifetime-warranty)